

"Last year we had eight derailments, since installing 'The Way' switch [indicators] we have had zero."

-Superintendent, Grain Terminal in Oregon

"I have seen and worked with them myself first-hand. They are very well designed and are easy to see from a distance, allowing crews to operate safer. I would recommend them to anyone involved in the rail industry."

-Senior Manager Terminal Operation, Union Pacific

"We had a switch that was ran through eleven times in 40 days, since updating to these switch indicators we haven't gone through it once in four months."

-Manager, Grain Terminal, Washington



Safer switching means changing operator's behavior.

Railroad switch indicators in use today are **corroding, confusing, & unclear**. Simply put, they don't indicate anything to trainmen.

Operators need a switch indicator that **alerts** them to what lies ahead, and **corresponds** to what the switch points say.

THE WAY™ switch indicator is the only indicator designed to train employees to double check every switch-point. Increasing **safety** and **reducing human factor incidents at train yards**.

Safety Experts.

TRACK INSPECTION

VEGETATION CONTROL

SWITCH INDICATORS

SAFETY PRODUCTS

RAILROAD CONSULTING

TRACK MAINTENANCE

RAILROAD SAFETY TRAINING

THE WAY™

SWITCH INDICATORS

RSO-OREGON.COM | 503.683.7722

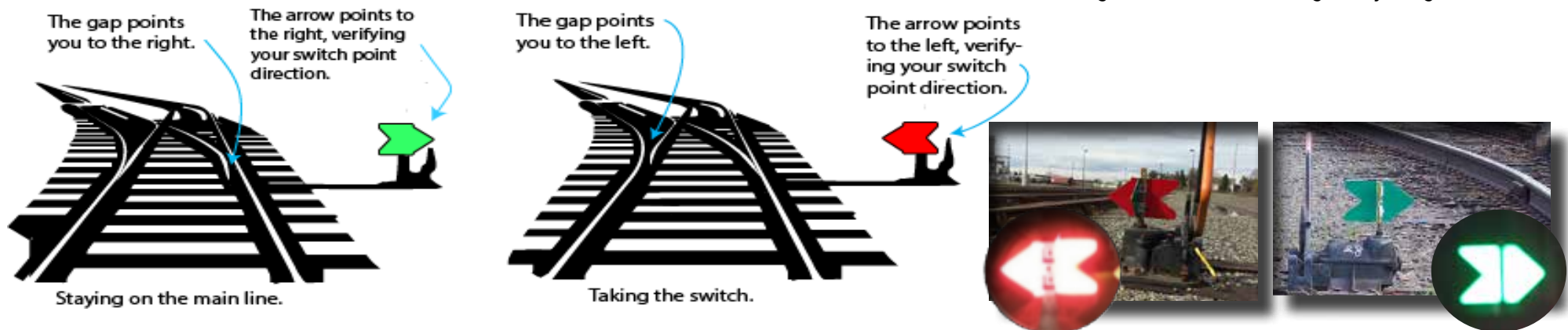
Designed for operators.

RELIABLE AND AFFORDABLE SAFETY SOLUTION

Reading the gap at a switch point is the only way to assure you will not run through a switch incorrectly. The Way Switch Indicator is a patented design that corresponds to the gap and the switch points, giving operators a double-check at every switch. This is the best way to reduce Human Factor Incidents that occur when crews run through switches.

Stop running through switches.

- Arrows correspond to the switch points, providing operators with a visual double-check.
- 2-4x more reflective than standard targets
- Mounts to ALL typical switches - providing one standard for all industrial, switching yard, and road movements.
- Made in the USA of alluminum and 3M Engineer Grade sheeting. 10 year guarantee



It's an issue of Safety.

OVER 34% OF DERAILMENTS INVOLVE HUMAN FACTOR INCIDENTS

Switches are the most common location for human factor derailments. Switch indicators are suppose to correspond with the switch points, verifying what the switch points say. Instead they are corroded, difficult to discern, and unclear. The Way Switch Indicator is designed to speak to operators at switch points - reducing the amount of switches that are run through, and increasing the safety of switching.

